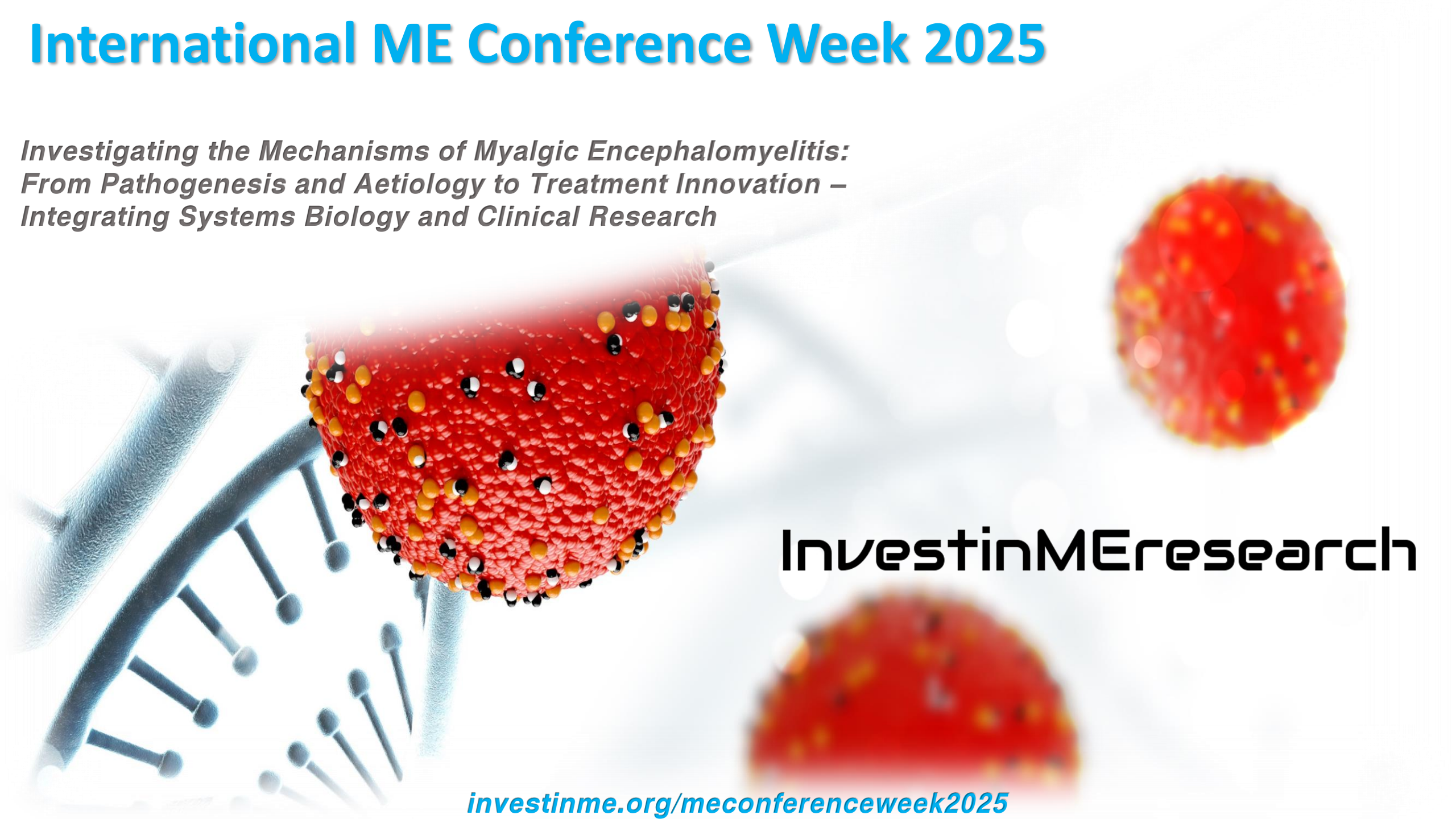


International ME Conference Week 2025

*Investigating the Mechanisms of Myalgic Encephalomyelitis:
From Pathogenesis and Aetiology to Treatment Innovation –
Integrating Systems Biology and Clinical Research*

InvestinMEresearch

investinme.org/meconferenceweek2025





Chairman's Message

Dear Friends and Supporters,

Welcome to our International ME Conference Week, another step in advancing progress in research into Myalgic Encephalomyelitis (ME). Since 2005, Invest in ME Research, a volunteer-run charity, has created some impactful initiatives. From organising influential conferences to helping establish research fellowships, from initiating European collaboration to funding the only UK clinical trial for ME, we have made strides thanks to the backing and the efforts of our great supporters. Internationally, our collaborations with various research programs and groups highlight our commitment. Our success in helping to lay the foundations for the Centre of Excellence for ME at Norwich Research Park is a testament to our dedication.

Our advocacy aims to kick-start biomedical research and support and sustain our foundations. As we shape this year's Colloquium around 'THE INFECTIOUS AETIOLOGY' of ME/CFS, we invite you to join us in shaping the future of ME research.

Our charity's name echoes our mission - [#InvestinMeresearch](https://www.investinmeresearch.org). Welcome to our conference week – this year spanning five days.

Kathleen McCall
Chairman, Invest in ME Research

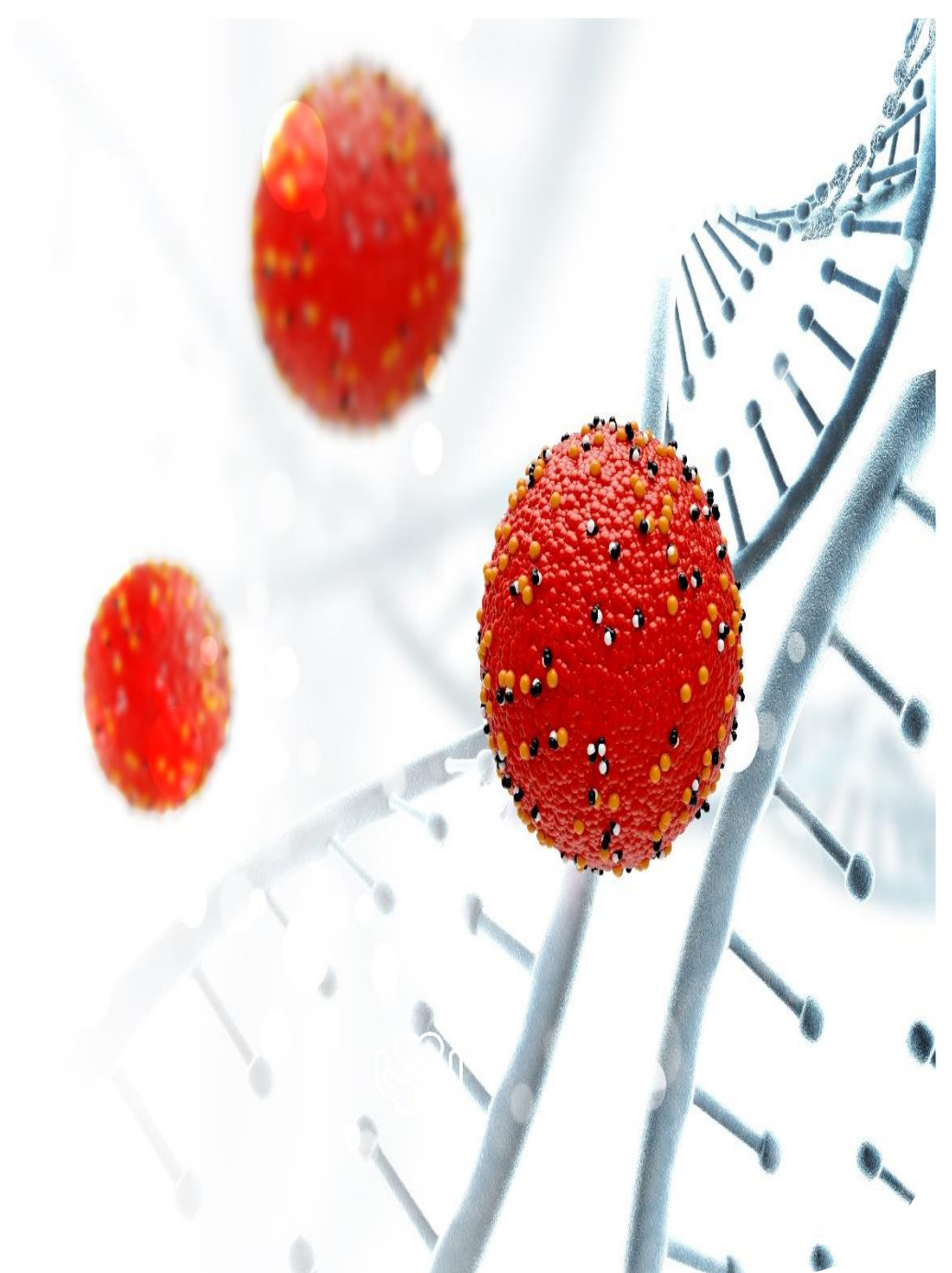


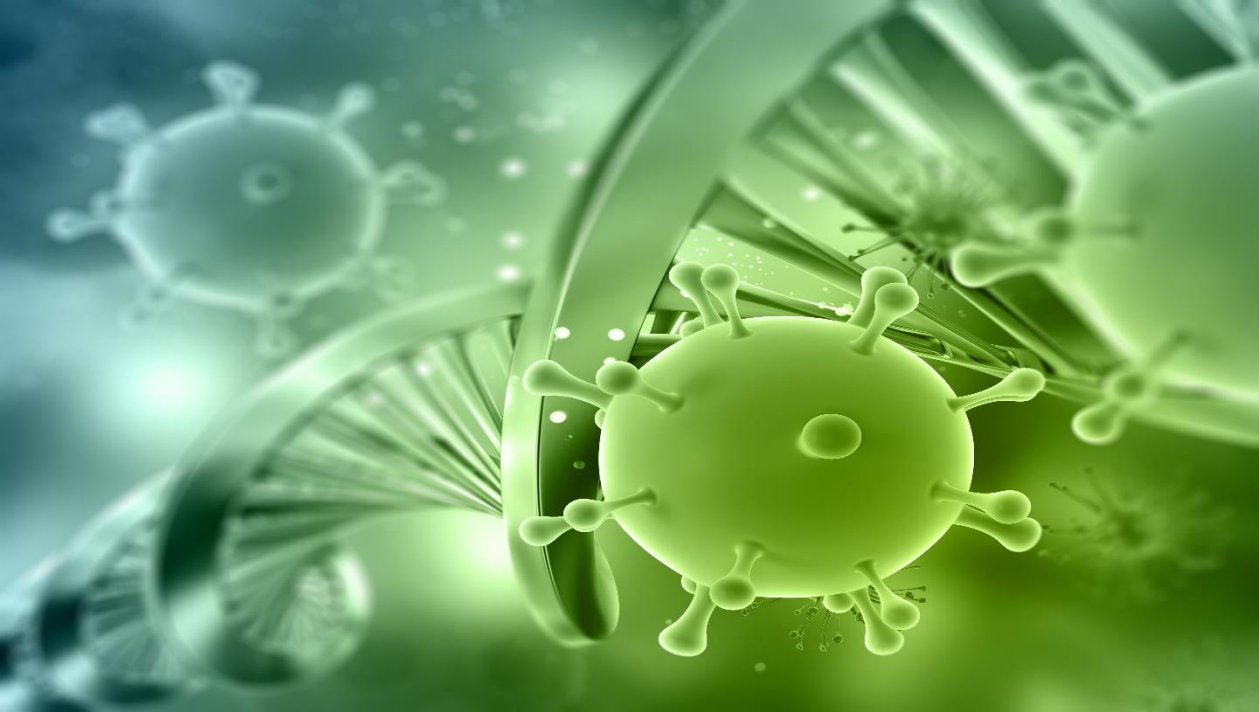
About Myalgic Encephalomyelitis

Myalgic encephalomyelitis (ME, sometimes referred to ME/CFS) is a severe systemic, acquired illness classified by the WHO in the ICD-10 code G93.3 as a neurological illness.

In the UK ME is estimated to be twice as common as MS and three times more prevalent than HIV/AIDS, with clear clinical symptoms which manifest predominantly based on neurological, immunological and endocrinological dysfunction.

While the pathogenesis is suggested to be multi-factorial, the hypothesis of initiation by a viral infection has been prominent. A wide range of viruses and other infectious agents, such as Epstein-Barr Virus, Human Herpes virus-6 and 7, Enterovirus, Cytomegalovirus, Lentivirus, Retroviruses, Chlamydia and Mycoplasma have been investigated. Before acquiring the illness most patients were healthy, leading full and active lifestyles. ME most frequently follows an acute prodromal infection, varying from upper respiratory infections, bronchitis or sinusitis, or gastroenteritis, or an acute “flu-like” illness.





#BRMEC14

28 – 30 May 2025

The 14th Biomedical Research into ME Research Colloquium (BRMEC14), organised by the charity, brings together international scientists and clinicians dedicated to myalgic encephalomyelitis (ME, sometimes referred to as ME/CFS). This event serves as a platform for advancing research by facilitating the exchange of knowledge and collaboration, thereby contributing to a deeper global understanding of ME.

The Infectious Aetiology of ME

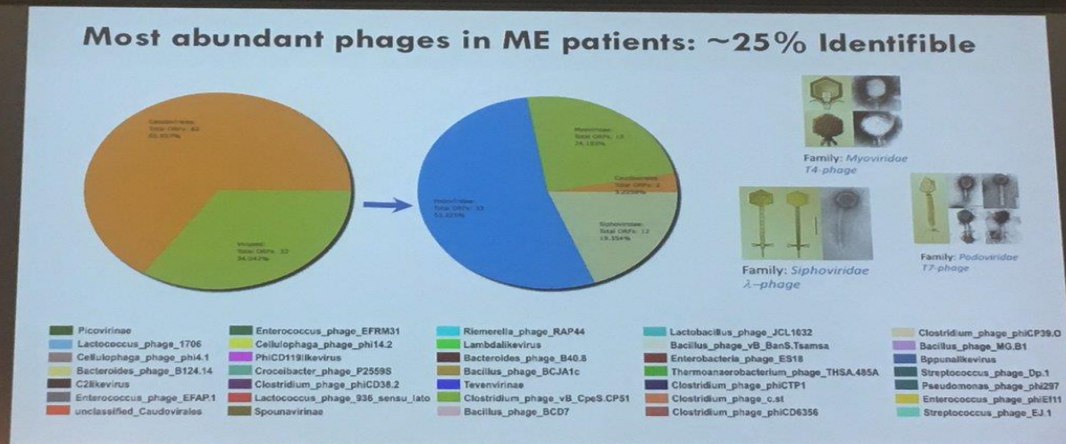
This year's theme, 'Integrating Systems Biology and Clinical Research' focuses on uncovering the complexities of ME from a systems biology angle, exploring acute infection, chronic infection, and co-infection.

#BRMEC14 introduces a collaborative format with sessions covering various aspects of ME research, facilitating in-depth discussions on Chronic Infection, Nervous System and Neuroinflammation, Immune System, Metabolism, Epigenomes and Transcriptomes, Physiology, and Other Non-Infectious Trauma.



#BRMEC14

investinme.org/BRMEC14



#IIMEC17

The 17th Invest in ME Research International ME Conference brings together international scientists, clinicians, patient groups, patients and carers in a unique atmosphere of collaboration and determination dedicated to discovery around myalgic encephalomyelitis.

This event serves as a platform for advancing research by facilitating the exchange of knowledge and collaboration, thereby contributing to a deeper global understanding of ME.

Bridging Research and Clinical Treatment

Taking place on the 30th May 2025, IIMEC17 will build on the foundation of our two-day researcher colloquium, and continues our mission of bringing research and clinical expertise to bear on Myalgic Encephalomyelitis, setting the stage for impactful advancements in the field.

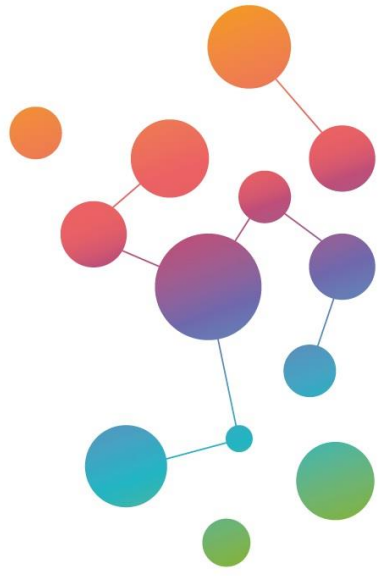
Updates on research into ME from around the world will also be given – providing insights into clinical evidence-based practices as well as providing input from the previous two days of the BRMEC14 closed researchers Colloquium.

17th International ME Clinicians' Conference

#IIMEC17
30 May 2025



investinme.org/IIMEC17



young **EMERG**

A future for
research into ME

A Future for Research into ME

The workshop will bring together young international scientists and students working on, or interested in, myalgic encephalomyelitis (and also those involved with long covid research) and will advance research into the disease by facilitating the sharing of knowledge and collaboration between researchers from around the world.

A unique networking opportunity for early career researchers involved with research into ME, and those involved in other research areas wishing to collaborate and share knowledge.

#SPARK ME

26-27 May 2024

The next young/early career researcher conference organised by Young EMERG (European ME Research Group Early Career Network) and UK charity Invest in ME Research takes place over two days – 26-27th May 2025 at the Wellcome Genome Campus near Cambridge, UK, prior to the 14th Invest in ME Research International Biomedical Research into ME Colloquium.



youngemerg.com/yemerg05.shtml

Initiatives formed by Invest in ME Research



EMERG European ME Research Group

A collaboration of ideas and skills and facilities to allow European researchers to work together

EMECC European ME Clinicians Group

A network of experienced European ME clinicians

EMEA European ME Alliance

Patient organisations in Europe advocating for people with ME

YEMERG Young EMERG

A network of young and early career researchers in Europe

27 May 2025 - NIH/European ME Research Group Planning Meeting

A Favourite Conference Quote

“The whole idea that you can take a disease like this (ME) and exercise your way to health is foolishness. It is insane...”

Dr. Paul Cheney, USA

Invest in ME Research Conference [#IIMEC5 \(2010\)](#)



**Paul
Cheney**

International ME Conference Week 2025



14
#BRMEC14

Sponsorship Opportunities

17
#IIMEC17

We have possibilities to support the charity in its work by sponsoring elements of the conference week events.

These include sponsoring one of the evening dinners which are arranged to allow researchers and clinicians, and also patient groups, to interact and improve knowledge and awareness of research into ME.

We have dedicated tables in the large exhibition area outside of the conference auditorium where your products or information may be displayed during morning, afternoon and lunch breaks.

The charity covers costs for these events and subsidises tickets to facilitate collaboration and knowledge sharing and so welcomes any support for our work.

Contact the charity at info@investinme.org if interested.

www.investinme.org

Invest in ME Research

Address: Invest in ME Research
PO Box 561
Eastleigh SO50 0GQ
Hampshire, UK

Phone: 02380 643736 / 07759 349743

Email: info@investinme.org



www.investinme.org